

ARTE NAÏF

NENHUM
MUSEU
A MENOS

Textual content on the yellow wall, likely describing the exhibition or the artists.



Logos and additional text at the bottom of the wall panel.





Small informational label for the painting.



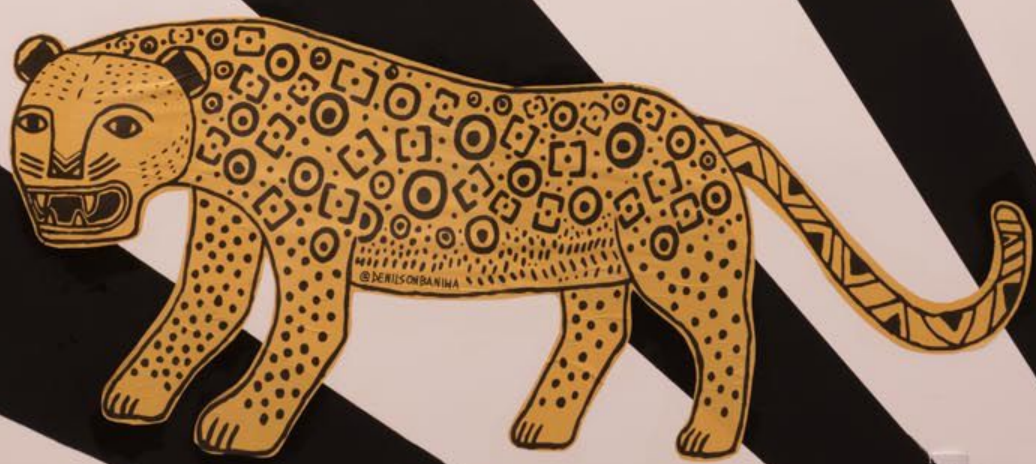
Small informational label for the photograph.

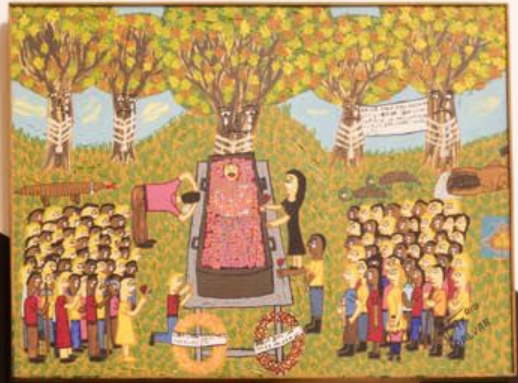


10/11/13 00:00:00 0002299

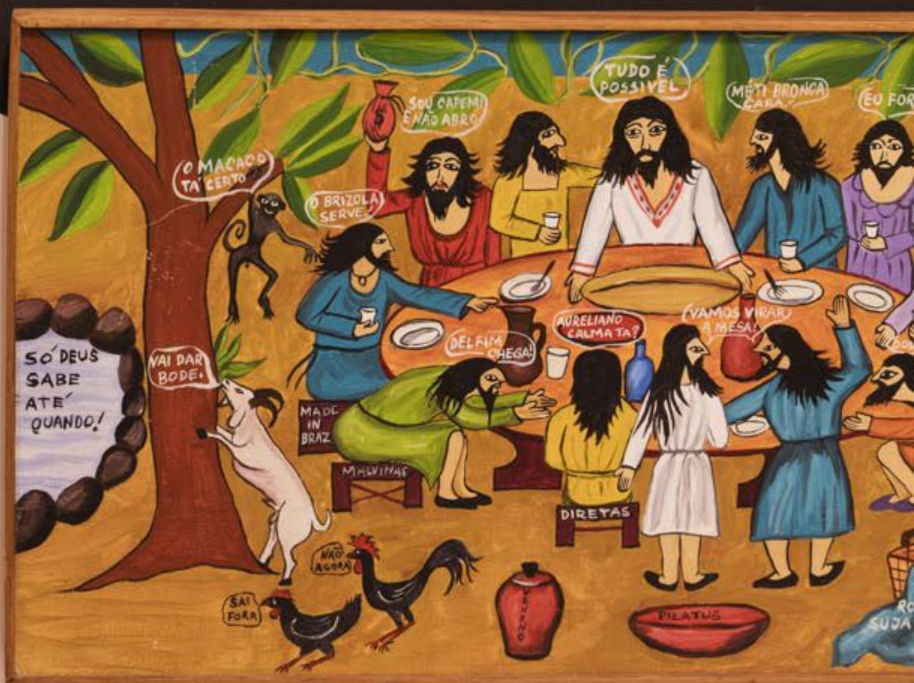
Mortes nº 33
**SERVIÇO
E PROTEÇÃO**
(2017)

Morte
Por intoxicação
de agente do estado nº 1546
COR: NEGRA
Rota: R. DE JACARA





EXPOSICIÓN DE OBRAS	EXPOSICIÓN DE OBRAS
EXPOSICIÓN DE OBRAS	EXPOSICIÓN DE OBRAS
EXPOSICIÓN DE OBRAS	EXPOSICIÓN DE OBRAS
EXPOSICIÓN DE OBRAS	EXPOSICIÓN DE OBRAS

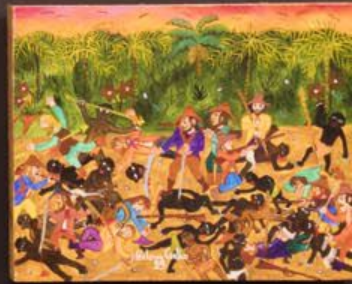
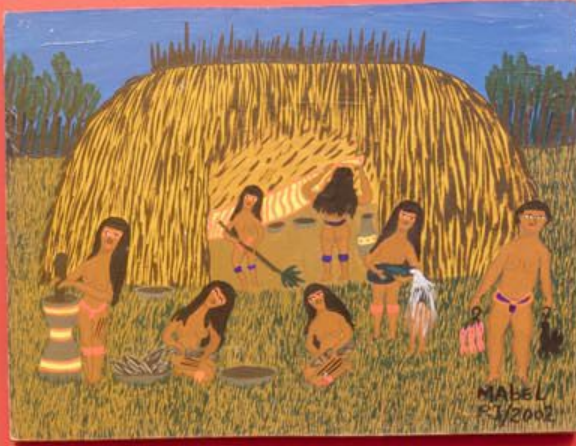


IVAN
 1940 - São Paulo, SP
 1960 - São Paulo, SP
 1960 - São Paulo, SP

ERRA DA CRUZ
 1960 - São Paulo, SP
 1960 - São Paulo, SP
 1960 - São Paulo, SP

IVAN
 1940 - São Paulo, SP
 1960 - São Paulo, SP
 1960 - São Paulo, SP







1	2	3	4	5
6	7	8	9	10
11	12	13	14	15
16	17	18	19	20

GABRIELE GOMES
Bossa nova em 4/4, 2010
Óleo sobre tela, 100x100
Colecção de artefactos

GABRIELE GOMES
Lágrimas para o mundo, 2010
Óleo sobre tela, 100x100
Colecção de artefactos

GABRIELE GOMES
Bossa nova em 4/4, 2010
Óleo sobre tela, 100x100
Colecção de artefactos





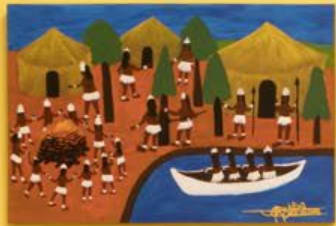
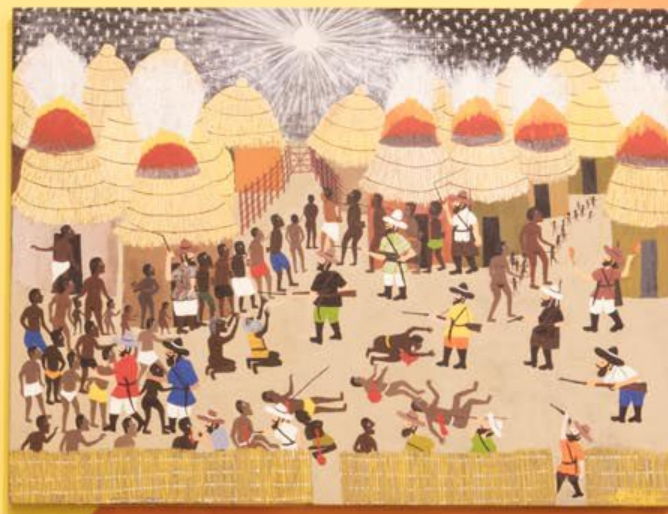


ROSANA PAULINO
Desenvolvimento e implementação de design em parceria com a Fundação de Amparo à Pesquisa do Estado de São Paulo (FAPESP), 2010

DANIEL SANTISO
1917, 2016

ROSANA PAULINO
Desenvolvimento e implementação de design em parceria com a Fundação de Amparo à Pesquisa do Estado de São Paulo (FAPESP), 2010







DOA INFENÇAS (1798) FELIZ DESTINO (1818) FELIZ DIAS A POLIZONICOS (1821)

SERVIR E PROFETER (1819)

BINGUE DO DOS MENINGOS (1826)





DIREITO AO ÓCIO **DIREITO AO ÓCIO**





Small informational label.



Small informational label.





- 1. A muscular male figure in a loincloth, standing with one leg forward.
- 2. A male figure in a loincloth, standing with hands on hips.
- 3. A male figure in a loincloth, standing with hands on hips.
- 4. A male figure in a loincloth, standing with hands on hips.
- 5. A male figure in a loincloth, standing with hands on hips.
- 6. A female figure in a long, flowing dress, standing with hands on hips.
- 7. A female figure in a long, flowing dress, standing with hands on hips.
- 8. A female figure in a long, flowing dress, standing with hands on hips.
- 9. A female figure in a long, flowing dress, standing with hands on hips.
- 10. A female figure in a long, flowing dress, standing with hands on hips.
- 11. A female figure in a long, flowing dress, standing with hands on hips.
- 12. A female figure in a long, flowing dress, standing with hands on hips.
- 13. A female figure in a long, flowing dress, standing with hands on hips.
- 14. A female figure in a long, flowing dress, standing with hands on hips.

- 1. A small, dark, rounded figure.
- 2. A small, dark, rounded figure.
- 3. A small, dark, rounded figure.
- 4. A small, dark, rounded figure.
- 5. A small, dark, rounded figure.
- 6. A small, dark, rounded figure.
- 7. A small, dark, rounded figure.
- 8. A small, dark, rounded figure.

BOA INTENÇÃO (1798)

BANDEIRA: Portugal
Rota: Angola - Brasil
Tipo de Embarcação: Galea
Total de Escravos Embarcados: 324
Total de Escravos Desembarcados: 294
Mortes: 33



SERVIR E PROTEGER (2017)

Morte por intervenção de agente do Estado: 1546
Cor: Negra
Rota: Rio de Janeiro

FELIZ DESTINO (1818)

BANDEIRA: Portugal
Rota: Rio de Janeiro - Belem
Total de Escravos Embarcados: 390
Total de Escravos Desembarcados: 395
Mortes: 37



FELIZ DIAS A POBREZINHOS (1812)



BANDEIRA: Portugal / Brasil
Tipo de Embarcação: Galea
Escravos Transportados: 395
Escravos Mortos Durante a Viagem: 100

BRINQUE DO DOS MENINOS (1826)

BANDEIRA: Portugal / Brasil
Tipo de Embarcação: Galea
Escravos Transportados: 395
Escravos Mortos Durante a Viagem: 100





BELVA DE LEON CHALECO
ARGENTINO VIGNA
ARGENTINO VIGNA
ARGENTINO VIGNA
ARGENTINO VIGNA
ARGENTINO VIGNA

